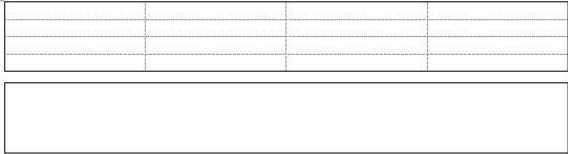


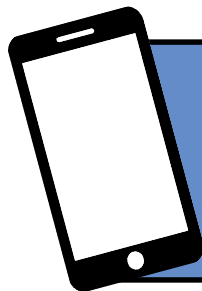


How do I hide the gridlines?

Although you may have set the borders of your table to 'No Borders' they will still show on screen as grey dotted lines. It is possible to hide these lines completely.



1. Click within the table.
2. Click to display the 'Table Tools, Layout' ribbon.
3. Click the 'View Gridlines' button.
4. Click the button again to reshown the gridlines.



For help and assistance,
call the ICT Helpdesk
0141-342 1570

Available during office hours. For critical support at other times refer to the out-of-hours phone list.